



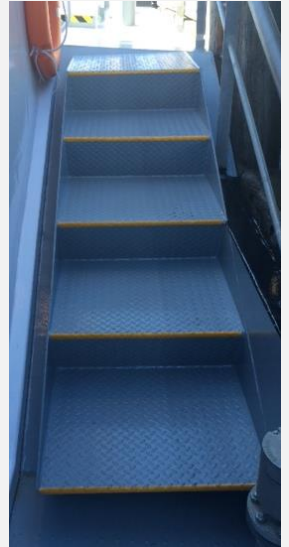
PLATFORM ZERO INCIDENTS

SF17-21

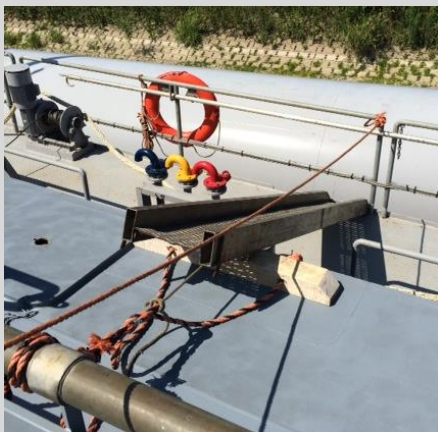
SAFETY FLASH: LADDERS & STAIRWELLS

GOOD PRACTICE

- ✔ Use markings and anti-slip
- ✔ Make sure the area is well lit
- ✔ Make sure ladders are secured
- ✔ Wear appropriate footwear
- ✔ Keep your hands free so you can hold the ladder with two hands (use backpack)
- ✔ Decent with you face towards the stairs
- ✔ Do a LMRA (Last Minute Risk Assessment) (check if the steps are safe to use, also when going on or from board)



On average **1 or 2 times a month** a crewmember falls down a stairwell or ladder. Frequently, the crewmember is injured, sometimes this even leads to permanent disability. Therefore, always be alert when you or your colleague enters a stairwell/ladder.



BAD PRACTICE

- ✘ Materials on the steps
- ✘ Dirty steps; pay extra attention to quay side stairs that can be slippery because of algae or ice
- ✘ Ladders/stair in bad shape (dirty, broken, damaged)
- ✘ Both hands are not free because you carry something

ACTION QUESTIONS:

- What is the state of the ladders and stairwells on our ship? (pass through every space)
- What can we do to enhance the state of the ladders and stairwells? What would we need?
- How can we help each other to stay alert?

Disclaimer: The information in this document was drawn up with the highest possible accuracy. However, the Platform Zero Incidents and its participants cannot be held liable in any way for its content. Adopting measures, suggestions, warnings, etc. must therefore always be preceded by weighing up and risk assessment. Spreading this document among third parties is allowed provided that this is done in the original form.

